

## **2007 OFFICIAL N.W.B.R. BASEBALL RULES**

**AGE LIMIT:** See back of cover page for limits of birth dates for each class. D1 thru B2 players born within the dates of June 1<sup>st</sup> thru and including July 31<sup>st</sup> may have the option to play down without having permission from the league supervisors, but must have approval from the area supervisor. Any player born before May 31<sup>st</sup> must be voted on by the league supervisors in order to play down. Any player playing down may not pitch. Players may play up with the approval of their area supervisor.

Any A-Minor team with more than 4 older players will be classified an A-Minor Red team. A-Major players may ***not play down***. A-Minor is a two year league. All players in A-Minor may pitch regardless of age (A-2 age players may pitch at A-1.)

**TEAM ROSTER:** Team rosters are for the 2007 baseball season and the NWBR post season tournaments. Each player and their parent/guardian must have signed an area registration card and N.W.B.R. release/disclaimer form before the player can participate in a N.W.B.R. game. A player may play on only one N.W.B.R. team and may not play for another team except for a school team or CYO. All players on a team must be listed on an N.W.B.R. team roster, signed by the manager and area supervisor. This roster must be submitted to the league supervisor on or before March 6, 2007 for classes D-1 through A-Minor and May 8, 2007 for A-Major. Any team who does not submit a roster by the deadline will forfeit each game played while the roster is outstanding. No team will be scheduled for tournaments without a roster.

**NEW/ ABSENT/ RETURNING PLAYERS & RELEASES:** Effective 2007 rulebook language relating to player release forms has been deleted. No new player/s may be added to a roster after May 8, 2007, for D-1 through A-Minor, and June 8, 2007, for A-Major.

**NOTE:** If five or more returning players have played on the same team and/or in the same league outside the N.W.B.R. during their absence, all cannot be placed on the same team without board approval. No team may return intact.

**MANAGERS AGREEMENT TO RESPONSIBILITIES:** The official team manager, along with the area baseball supervisor, will be held accountable for the correct birth date and permanent address of his players as shown on the team roster. Manager and team using an ineligible player will be penalized by forfeiture of all games in which the ineligible player participated.

**PLAYER'S OPTIONS:** Any youth who has played or registered in a given area within the league may transfer to another area without a signed release from his area's baseball supervisor.

## ***2007 OFFICIAL N.W.B.R. BASEBALL RULES***

**INELIGIBLE PLAYER:** A roster protest may be made at any time during the playing season against a team carrying an ineligible player as previously defined. This clause may not be invoked after the N.W.B.R. league supervisors have certified the final standings at the end of the regular season. A \$50.00 protest fee will be assessed, birth certificates may be requested, and tournament play will be at the discretion of the N.W.B.R. supervisors.

**LEGAL TEAM:** A legal team shall consist of not less than 11 or more than 17 players, except A-Major, which may carry 22. All players are to be placed without regard to the player's athletic ability through a face up or face down draw at the time of the teams original formation. This must be done in the presence of the area supervisor and the managers.

**N.W.B.R. TEAM LEGALITY:** A team will not be permitted to participate in the league unless it is associated with one of the area organizations listed on the front page and agrees to abide by the rules as set down by the area as well as the N.W.B.R. rules. Any new or combined teams without a prior record will be placed in the red division.

**RECRUITING:** Any manager, coach, or interested party connected with an N.W.B.R. team found by the Northwest Board to be recruiting players from another team or another area's team shall be penalized in the following manner. The team in violation shall be permitted to play all of its scheduled league games, but will not be allowed to participate in any league post season play. If the offending team is the division winner, the second place team shall be declared the winner. The individual responsible shall be indefinitely suspended pending a board hearing. The decision of the N.W.B.R. baseball supervisors will be final and binding.

**MANAGER'S GAME RESPONSIBILITIES:** Each manager is responsible for the total conduct of every game in which his team participates, including the conduct of the team's fans, coaches, and players. The umpires have the authority to enforce all league rules. However, if they experience unexpected difficulties, it is mandatory that the managers assist the umpires in every way possible in maintaining the control and conduct of the game. Manager must carry roster of players with him at all times.

No one will stand or sit directly behind the backstop (30' minimum distance unless there are fixed bleachers) and interfere in any way with the umpires or players at any time. There will be no foul language used and no fighting allowed by anyone connected with the league. No player or coach is permitted to use tobacco or alcohol in any form during a game. It is the manager's job to police this rule. Under no circumstances should alcoholic beverages be taken onto any public school field. After umpire warning, any manager or coach who allows continuous harassment of opposing teams or players by any member of his/her coaching staff, team, or followers will be liable for indefinite suspension, pending hearing before area supervisors. In the event of any type of unsportsmanlike conduct, the umpires have the authority to clear the bench, playing area, and/or spectator's area of all offenders.

**PENALTY: GAME MAY BE FORFEITED AND GUILTY INDIVIDUALS SUSPENDED.**

## **2007 OFFICIAL N.W.B.R. BASEBALL RULES**

**UMPIRE PAYING:** Each area is responsible for paying the umpires directly. This will be accomplished by the home team manager, as designated by the schedule, not by what field the game is being played at. The umpire(s) will be paid before the game at the time ground rules are reviewed. Umpires will receive \$5 if the game is rained out after the game has started or if they show up for a game when they called the home manager in advance. It is the responsibility of each Area to coordinate the money needed, to pay the umpires, to their managers.

**MANAGER'S SUBSTITUTE:** If, for any reason, the home team manager cannot conduct his game on a scheduled playing date and wishes to turn the game over to an assistant, the manager is to notify the umpire coordinator at least one week in advance so that the umpires can contact his replacement. During the tournament, the tournament coordinator is to be contacted.

**PERSONNEL ON THE PLAYING FIELD:** Only the official manager, the designated coaches and participating players shall be allowed on the field of play and/or in the vicinity of the players' benches during the progress of an officially scheduled game. Failure to comply may result in ejection and possible forfeiture by the offending team, and an indefinite suspension, pending N.W.B.R. baseball supervisors hearing.

**STARTING TIMES:** Saturday games will begin at the times listed. **Weeknight games will begin at 6:15 p.m. unless otherwise noted.** Umpires will limit the warm-up time on the field to 5 minutes for each team and, if starting time has passed, no warm-up time will be allowed. As soon as a team has nine players, they must be ready to start play if the scheduled time has passed. No game may be started with less than nine players, on one or both teams.

**STARTING THE GAME:** Home team managers are responsible for laying out the field. The umpires must certify that the base and pitching distances are correct. Prior to the start of the game, ground rules will be established by the umpires with the counseling of both managers. Once it is agreed as to when the ball is out of play, the umpire will award bases as outlined in rule 7.05 F, G, H and I of the Major League rules of professional baseball.

**GAME RECORDS:** Both managers shall record their starting batting order on the chief umpire's score card prior to the start of the game. In Class A-Major, all substitutions and/or pitching changes must be reported to the umpires. In Class A-Minor and B, the starting pitcher should be noted, and if he is not in the batting order, his name should be listed at the bottom of the card. Any changes in the batting order or pitching changes should be reported. Other defensive changes need not be reported. In Class C and D games, only pitching changes need to be reported to the umpire.

**EJECTION/FIELD CONDUCT:** Any individual (player, manager, coach or spectator) ejected from the game ***must leave the field area and conduct themselves in a quiet and orderly manner.*** They are also automatically suspended for the next N.W.B.R. game their team participates in. He/she must not be within visual sight of the field during the

## ***2007 OFFICIAL N.W.B.R. BASEBALL RULES***

subsequent game while under suspension (including warm-ups before the game). Any attempt to play, manage, coach, or be a spectator while under suspension will result in a forfeit by the offending team and an indefinite suspension for the offending individual. Any suspension of a player, manager, coach or spectator for a second time in a season will enact an immediate indefinite suspension, pending a hearing before area baseball supervisors. Any individual ejected for fighting will be suspended for the next two N.W.B.R. league games.

**PROTESTS:** Any informal protest made during a league game must be made to the umpires before the next legal pitch is made. The umpires will then notify the other manager that the game is being played under protest. The game situation (batter, runners, outs, score, count and inning) will be noted by the umpire on the back of his card to be signed by both managers at that point in time. No information or basis for the protest is to be written on the card. To make a formal protest after the game, the protesting manager must present to his area supervisor, a written or typed letter containing the following information: game time and scheduled date, field played on, class, teams involved, play situation (rule that was misapplied), how the game (play) was handled, any other pertinent information, and a fee of \$50.00. The area supervisor is to notify the baseball league supervisor who will then notify the other area supervisors, within 24 hours after the scheduled game time, that he has received the protest. The letter and money must be forwarded to the League Administrator listed on the cover of this book within 48 hours of the scheduled game time. A protest board made up of not less than three impartial area supervisors, directed by the league supervisors, will judge on the protest within seven days of the game. No action will be taken unless the entire procedure is followed to the letter. If the protesting manager wishes to appeal the ruling of the protest board, he may then request a formal hearing by the Northwest Board of Recreation by forwarding an additional \$50.00 to the League Administrator with a note requesting such.

**NOTE:** ANY JUDGMENT CALL, SUCH AS SAFE, OUT BALL, STRIKE, ETC., HAS NO BASIS FOR PROTEST. ONLY MISAPPLIED RULES OR INELIGIBLE PLAYERS MAY BE PROTESTED.

**POSTPONED GAMES:** Any manager wishing to postpone a game must notify the **AREA SUPERVISORS seven days prior to the rescheduling of the game. Only school functions making it impossible to field nine players will be allowed.** High school baseball programs are a valid reason for postponement due to the extension of the A level season. These requirements must be followed to the letter to be considered. Games that are rained out are not bound by these restrictions.

**RAINED OUT GAMES:** In the event of a rain-out game. The home team manager will call the umpires for that game and the visiting team manager, once it is determined by the Home Area Supervisor, or his designee, that the field is unplayable. If the umpires are

## 2007 OFFICIAL N.W.B.R. BASEBALL RULES

not notified and come to the designated field, the home team area will be charged with a show-up fee. **The home team manager must reschedule the game within one week.** If there is not an attempt to schedule the game within one week, **both managers should contact their area supervisor.** The baseball supervisors may reschedule the game at their discretion. **A forfeit can only be declared by mutual consent of the affected areas baseball supervisors.** To obtain umpires for a rain-out, do not make your own arrangements. Call your umpire coordinator at least 48 hours in advance of such a game. **DO NOT CALL AFTER 11:00 P.M. ON ANY EVENING.**

**REPORTING GAME RECORDS:** The winning team shall call into the league scorekeeper within 10 days of the date of the game played, with the following information: The score of the game and the date the game was played. If you do not call the scorekeeper within the allotted time, all affected games will be counted as "Game Not Played" for the winning team. The game for the losing team will still count as a loss. If you cannot reach the scorekeeper within the allotted time, call your area supervisor to report the results of the game within the allotted time.

**Note:** Coaches should update scorekeepers of a rescheduled rain out game to maintain the 10-day allowance for reporting scores.

**DETERMINING LEAGUE CHAMPION:** The league champion shall be determined by the highest number of points a team accumulates in a season. Points are awarded based upon the following formula:

EVENT	NUMBER OF POINTS EARNED
A WIN	3
A TIE	2
A LOSS	1
GAME NOT PLAYED	0

**LEAGUE TIE BREAKERS** - This procedure applies to all situations in which a tie will affect functions of the league (i.e. league championship, who will play in the World Series, etc.)

**FIRST TIE BREAKER** - If two teams are tied, then the head to head won/loss record of the teams shall determine the winner (i.e. if team 1 beat team 2 in head to head competition, then team 1 is the winner). If more than one team is tied, then the total points of the teams for games played head to head with the other teams tied shall be calculated. The team with the highest number of points on this basis shall be declared winner.

**SECOND TIE BREAKER** - If the teams evenly split games played against each other, then the winner shall be determined by the total number of points the teams to which the

## ***2007 OFFICIAL N.W.B.R. BASEBALL RULES***

teams breaking a tie lost (i.e. team 1 lost a team(s) with 20 points and team 2 lost to team(s), with 30 points, then team 2 would be the winner).

***THIRD TIE BREAKER*** - If the first and second tie breakers do not determine a winner, then the NWBR Board of Baseball Supervisors shall determine a winner by a method of their choosing.

### **TEAM DIVISION CATEGORIES ARE AS FOLLOWS:**

1st Division - Red  
2nd Division - Blue  
3rd Division - Green  
4th Division - Gold

**EXCEPTION:** In D-1 teams are not seeded as to their previous year's record.

**CONCESSION STANDS:** Teams should not bring drinks or food to games played on fields with concession stands. Income from this source helps to defray the cost of maintaining these fields. Those fields with concession stands and their locations are listed in the rear of this booklet.

**Please encourage your teams to patronize the concession stand rather than going off site (i.e. to an ice cream stand close by.)**

# 2007 OFFICIAL N.W.B.R. BASEBALL RULES

## APPROVED EQUIPMENT AND GAME RULES

The Northwest Board of Recreation, Baseball program will be played in accordance with National League baseball rules with the following exceptions.

**LEGAL GAME:** A team must field nine roster players to start a legal game. If a team cannot field nine roster players, the game is a forfeit. The grace period is fifteen minutes from the scheduled time. In the event that the game is started legally and because of injury, illness, or family business, a team cannot field nine players at some time during the game, the game will continue. A game cannot be started with injured or very sick players (umpires' judgment) who are not capable of playing without risk to him or others. A manager may not arbitrarily bench a player (his ninth and only) without forfeiture. (Players wearing casts may not play.)

### **GAME LOGISTICS:**

<u>Class</u>	<u>Official Game</u>	<u>Legal Game</u> (Inn. Comp.)	<u>Base Distance</u>	<u>Pitching Distance</u>
A	7 innings	4 1/2*	90 feet	60 feet - 6 inches
B-2	6 innings	4 1/2*	85 feet	57 feet
B-1	6 innings	4 1/2*	80 feet	54 feet
C-2	6 innings	4 1/2*	75 feet	51 feet
C-1	5 innings	3 1/2*	70 feet	48 feet
D-2	5 innings	3 1/2*	65 feet	45 feet
D-1	5 innings	3 1/2*	60 feet	42 feet

\* PROVIDED HOME TEAM IS LEADING GOING INTO THE BOTTOM OF THE INNING

**GAME TIME LIMIT:** Teams leading by ten runs or more after a legal game, as specified in the game logistics, will be declared the winner. If no team is leading by ten runs or more, then the game continues until an official game is played.

**FOR D1 GAMES ONLY:** No new inning may begin after 1 hour and 45 minutes of game play (excluding weather delays). Any inning in progress at the 1 hour and 45 minute mark shall be completed. If the score is tied at the conclusion of the inning, the game will be recorded as a tie.

A game called because of darkness or rain which is a legal game shall be declared complete in the event of a tie. If the home team is losing when the game is called the score shall revert back to the end of the last full inning played up to or BEYOND a legal game.

### **BATTING ORDER:**

## **2007 OFFICIAL N.W.B.R. BASEBALL RULES**

**CLASSES C AND D** - Continuous batting order will be used. The manager must submit a continuous batting order consisting of all roster players present. Players arriving after the start of the game will bat after the last batter in the original order. There are no pinch hitters and/or runners. If a player must leave the game due to injury, illness or emergency, he will be skipped in the batting order. This will **NOT** be an out. C and D-ball requires 2 innings of defense and has free re-entry.

**BI THRU A-MAJOR** - The manager may choose to use an ADDITIONAL HITTER (AH) in the batting order. The manager has the option of submitting a batting order of either nine or ten players OR CONTINUOUS BAATING ORDER. The manager must declare this option to the umpire in chief prior to the start of the game. The option declared at the start of the game will be in effect for the entire game.

**ALL A AND B LEVEL GAMES** - Between pitches, the player must keep 1 foot in the batters box unless time has been called by the umpire. Penalty for violation of this infraction is a called strike by the umpire (in the batters box is umpires judgment).

### **RE-ENTRY RULE:**

**CLASSES B THRU A-MINOR** - Teams in these classes have unlimited substitution on defense with the exception of the pitcher, who must follow normal pitching restrictions outlined in the pitching rules. Each team will have a nine man batting order which does not have to have any connection with the defense on the field. A team with 18 players could have 9 fielders and another group of 9 batters. Any one of the starting 9 batters may be removed from the game and re-enter, providing such batter occupies the same batting position whenever he is in the line-up. A substitute may re-enter after being replaced by a starting batter or a batter that has not batted as long as the substitute re-enters in the same position in the batting order. A pinch runner is considered to have entered the line-up for the player for whom he is running as a pinch runner. If a player has to leave due to an injury, illness or emergency, and cannot be replaced because all substitutes have been played, the player is to be replaced in the batting order by a player to be selected by the opposing manager with the approval of the umpire-in-chief. The player selected cannot be in the current batting order. Defensive substitutes may be made only during the half inning with the exception of the pitchers, injuries or illness. All players must play at least one inning on defense. This is the responsibility of the managers.

**CLASS A-MAJOR** - Teams in this class have unlimited substitution on defense with the exception of the pitcher, who must follow normal pitching restrictions outlined in the pitching rules. Defensive substitutes may be made only during the half inning with the exception of the pitchers, injuries or illness. This is the responsibility of the managers. Any one of the starting players may be removed from the batting order and re-entered once, providing such player occupies the same batting position whenever he is in the line-up. A substitute may enter the batting order only once. If a player has to leave the batting order due to injury, illness or emergency and cannot be replaced because all substitutes have batted, the player is to be replaced in the batting order by a player to be selected by the opposing manager with the approval of the umpire-in-chief. The player

## **2007 OFFICIAL N.W.B.R. BASEBALL RULES**

selected cannot be in the current batting order. A substitute who is removed from the batting order or a starter who is removed from the batting order a second time may not re-enter the batting order with the exception of the previous case.

**PITCHING CONFERENCES:** National League rules apply for Classes A, B and C. Two trips in an inning require a pitching change. ***Any attempt to bypass the rule will result in a charged trip to the mound.*** Class D may make three trips to the mound. The fourth trip must result in a pitching change. Time limit for **ALL** trips is one minute.

**THE PITCHER:** No player will be permitted to pitch in more than one game (including practice games, **any NWBR games, and any other organized games**) without two complete nights of rest between pitching assignments. This rule may not be waived by anyone. A player that is removed as a pitcher may not pitch again in the same game. In Classes A and B, no pitcher will be permitted to pitch a greater than that which is an official game. (Six innings means 18 outs for class B, Seven innings means 21 outs for Class A) **EXCEPTION:** Pitchers in the A classes may pitch a total of 21 outs over any two day period. Once the Class A pitcher reaches his limit over any two day period, he must then have two nights rest. Pitchers in the C-2 Class cannot pitch more than four innings or 12 outs in any one game. Pitchers in the C-1 and D Classes cannot pitch more than three innings or 9 outs in any one game. No warnings may be given for balks. If a balk is committed, the umpire shall call a balk and issue the penalties as stated in the major league rules.

**SLIDING BASE RULE:** If a runner slides into a base on a legal slide and the base moves, and the runner makes ***no attempt*** to advance, the runner is **NOT** in jeopardy of being put out. If a runner does not go into a base on a legal slide, such as standing up, and drags or knocks that base more than its width, the runner must get back to the original spot of the base or they may be tagged out. When a base is knocked out of line, all following runners can either go to the original spot of the base or to where the base is without being in jeopardy of being tagged out. **NOTE: ALL THE ABOVE SITUATIONS ARE ENTIRELY IN THE JUDGMENT OF THE UMPIRE.**

**BASE CRASHING:** Base crashing will not be allowed. Player in violation will be called out and possibly ejected from the game. Base crashing includes hurdling over the full body torso. This is also an UMPIRE JUDGMENT CALL. ***Rule 7.08 (B) or any attempt to dislodge ball or cause bodily harm.***

**COURTESY RUNNER:** A courtesy runner may replace the catcher after there are two outs at the discretion of the offensive manager. The courtesy runner may be any player not currently in the line-up. For C and D class, the courtesy runner may be the player who made the second out of the current inning.

**BAT AND HELMET SLINGING:** UNINTENTIONAL bat or helmet slinging can result in the batter being called out (umpire's judgment). ***INTENTIONAL slinging (umpire's judgment) will result in ejection for the offending player.***

## **2007 OFFICIAL N.W.B.R. BASEBALL RULES**

**COACHING AREA:** Umpires have the right to establish these areas (3 steps back from the base and no further than 10 feet down the line at the time of the pitch). After one warning to his/her team, the offending coach will be removed from the coaching boxes.

**DISPUTED PLAYS:** Only the official manager of the team may address the umpire(s) on any disputed play during the progress of the game. He may not enter the field of play, or leave the coaching box, to dispute a call without being granted permission by the umpire-in-chief. **PENALTY:** The offending individual will be ejected from the game.

**BATS:** Wood bats must be one piece with no tape. Bats made of aluminum or magnesium must have a grip of tape, rubber or cork. Slippery tape may not be used. The grip must extend a minimum of 10 inches but not more than 18 inches from the handle end of the bat. Effective for the 2008 N.W.B.R. season, A class players are restricted from using bats exceeding a minus 5 rating.

**UNIFORMS:** All players must have matching uniform (shirts, hats and pants, **and baseball socks**) with numbers (at least 2½ inches) that are visible at all times. **All exceptions to the uniform are at the umpire's discretion.**

**SPIKES:** No steel/metal or sharp plastic spikes will be allowed in any class except class A may wear steel spikes.

**PROTECTIVE EQUIPMENT:** The batter and all runners must wear a double-ear helmet while batting and running bases. Any intentional violation will result in the batter and/or runner being declared out immediately, unless time has been called. This action does not make the ball dead nor does it remove a force play. Catchers are required to wear a chest protector, mask, shin guards, throat protector and headgear covering the top of the head. The umpire(s) will not allow the game to start or continue unless the catcher is properly protected. It is recommended that male catchers wear an athletic supporter with a cup. **ANY PLAYER WARMING UP THE PITCHER AT THE PLATE OR OFF THE FIELD OF PLAY AT ANY TIME MUST WEAR A MASK.**

**EQUIPMENT CONTROL:** It is each manager's responsibility to see that all equipment is kept behind the player's bench and out of the field of play.

**PITCHING RUBBER:** Pitching rubbers are mandatory for all classes. There is no option to pitch off to one side or behind. The pitcher must be in contact with the front or top of the rubber with 2/3 of his pivot foot. For Classes A and B, a 24 inch rubber must be used. For Classes C and D, an 18 inch rubber should be used.

# ***2007 OFFICIAL N.W.B.R. BASEBALL RULES***

## ***THE FOLLOWING RULES APPLY FOR ALL CLASS D GAMES***

Continuous batting order will be used. See BATTING ORDER rule.

**TIME LIMIT:** For D1 games only, no new inning may begin after 1 hour and 45 minutes of game play (excluding weather delays). Any inning in progress at the 1 hour and 45 minute mark shall be completed. If the score is tied at the conclusion of the inning, the game will be recorded as a tie.

**SUBSTITUTIONS:** There is free substitution in the field. Substitutions may be made only during the half inning with the exception of pitching substitutions, injuries or illness. *All players must play at LEAST two innings on defense.* This is the responsibility of the managers.

**THE PITCHER:** A pitcher is allowed to pitch a maximum of 3 innings (9 outs) in one game. Once a pitcher is replaced, he may not pitch the remainder of the game.

**NINE MAN RULE:** THIS RULE IS OPTIONAL IN D-2 AND MANDATORY IN D-1. In D-2, if both managers do not agree to play by this rule, the regular 3 outs will be played the entire game. If both managers agree, they must both initial the umpire's score card before the game begins. When the ninth batter of the inning is up, the manager must announce this fact. This will be the last batter of the inning. The ninth batter must have at least 2 strikes called before he can walk. After 2 strikes have been called, ball 4 may be pitched and the batter will walk.

**EXCEPTION:** If the ninth batter is hit by a pitch, he must advance to first base immediately. Runners that are forced to advance by the ninth batter being walked or hit by a pitch may advance one base only. The inning ends when the batter and runners that are forced to advance, advance one base.

If the batter hits the ball, there are 2 outs at that point. Any out is the third out of that inning and the inning is over at that point. An out may be completed by any infielder (includes pitcher and catcher) stepping on home plate while in control of the ball.

Rules for scoring follow regular baseball rules when the third out of an inning is made.

**BATTING/PITCHING:** No balk will be called. If the pitcher balks, the umpire will call the ball dead. No infield fly rule will be called. No hidden ball plays will be allowed. There is no running on a dropped third strike. There are no restrictions on the type of fielding glove used, whether out in the field or on the mound.

**BASE RUNNERS:** There is no stealing and no pickoff attempts. The ball is dead unless hit or bunted. The runner may take a six-foot leadoff. The six-foot lead-off must be marked on the field and the runner's entire body must be to the base side of the mark. The runner may not run until the ball is hit or bunted. **PENALTY:** After one warning to his team, the offending runner will be called out.

## ***2007 OFFICIAL N.W.B.R. BASEBALL RULES***

**EXCEPTION:** Class D-2: **D-2 pickoffs are permitted by the pitcher from the stretch position** to any base may advance. The ball will be live once the pitcher throws the ball and the runners may advance. The runner is not out if the pitcher picks off the runner and commits a balk in the process.

# ***2007 OFFICIAL N.W.B.R. BASEBALL RULES***

## ***POST SEASON TOURNAMENTS***

**CHAMPIONSHIP SERIES/JIM BOYLE WORLD SERIES:** An entry fee will be charged for each team in the Championship Series and Jim Boyle World Series Tournaments to cover both umpire costs and trophies. Home team provides game ball and bases. All teams must carry extra balls for tournaments.

Tournament play is encouraged and any team wishing to participate must be entered by June 18, 2007. The tournaments will start approximately June 20, 2007. Teams must pay tournament fees prior to or at the June 18, 2007 scheduling or they will not be scheduled to play.

**PROTEST FORMAT:** For all post season N.W.B.R. tournament play, to make a formal protest, the manager of the team must notify the tournament director or his/her designee at the time of the disputed play. All protests shall be settled on the spot by the tournament director or his/her designee. The tournament director or his/her designee's decision is final.

**TOURNAMENT FORMATS:** Both the Championship Series and the Jim Boyle World Series Tournament will be double elimination format. For every game of a tournament, the team with the higher seeding shall be the home team.

**CHAMPIONSHIP SERIES:** The following teams will qualify for participation:

**Class D-1:** 1st place team from each division.

**Class D-2:** 1st and 2nd place team from the Red Division and the first place team from the Blue and Green Divisions.

**Class C-1 through A-Minor:** 1st, 2nd and 3rd place teams from the Red Division and the 1st place team from the Blue Division.

These teams may only enter the Championship Series, not the Jim Boyle World Series Tournament. If one qualifying team should elect not to enter this series, the next place team in that division shall be eligible.

**ELIGIBLE PLAYER:** To be eligible to play in any post season tournament, a player must have played in a minimum of two regular season games. There will be a mandatory roster check before each tournament game by the tournament director or their designee.

**JIM BOYLE WORLD SERIES TOURNAMENT:** All teams that do not qualify for the Championship Series will be eligible to participate. In those classes where the number of teams make it possible, multiple divisions will be formed, based on league records. Seeding will be accomplished to afford each team the best opportunity to win the tournament in which they are entered.

In tournaments, the game must be played in its entirety. If a game is stopped because of darkness, rain or lightning, it will be picked up from that point. Extra effort must be used

## ***2007 OFFICIAL N.W.B.R. BASEBALL RULES***

in order to get these games played. Each area must have fields in shape, to allow play to remain on schedule.

### **POST SEASON TOURNAMENT FEES WILL BE ANNOUNCED PRIOR TO THE END OF THE REGULAR SEASON:**

**DUTIES AND AUTHORITY OF LEAGUE SUPERVISORS:** The League/Area Supervisor has the authority to intervene in:

1. Approval and maintenance of the area rosters
2. Scheduling and rescheduling of home games
3. Assignment of umpires
4. Playing field conditions
5. Conduct of coach's participating in NWBR

**PROGRESSION OF SUPERVISORS:** The three League Supervisors will be assigned by area. One supervisor will serve two consecutive years according to the progression, to obtain the necessary training and experience to assume the duties of the second year.

The following is the progression that will be followed:

2007: Taylor Creek, White Oak and Colerain

2008: Morgan Ross, Bevis and Taylor Creek

2009: Three Rivers, Corpus Christi and Bevis

2010: Monfort Heights, Pleasant Run Farms and Three Rivers

2011: Mount Healthy, Colerain and Monfort Heights

2012: Mount Airy, Taylor Creek and Mount Healthy

2013: White Oak, Morgan Ross and Mount Airy

2014: Bevis, Corpus Christi and White Oak

2015: Corpus Christi, Three Rivers, Pleasant Run Farms

2016: Pleasant Run Farms, Colerain, Monfort Heights

2017: Colerain, Morgan Ross, Mount Healthy

### ***COACHES CODE OF ETHICS***

1. Know the rules of the game and teach them to your players.

## ***2007 OFFICIAL N.W.B.R. BASEBALL RULES***

2. Abide by the rules of the game and N.W.B.R. rules.
3. Treat the officials (umpire) with respect, no matter what the call.
4. Exhibit exemplary conduct at both practice and games. Team discipline reflects on the coach's attitude 100%.
5. Coach clean, skillful, honest sportsmanlike.
6. Stress good sportsmanship. The Coach is responsible for the conduct and attitude of the players.
7. Help maintain a climate of enjoyment among spectators by discouraging negative remarks or harassment of players, officials and other spectators.
8. Work at team moral as hard as game skills and tactics. Stress individual skill development. Have fun playing the game.
9. In dealing with team members, maximize praise, minimize criticism. Make corrections slowly and calmly in a manner tailored to the individual.
10. Refrain from profanity or vulgar language. Remember, you are helping to mold the character of your players.
11. Coach talented and non-talented players with equal vigor.
12. Welcome feedback from players and parents alike, concerning problems and ways to improve.
13. Alcohol usage prior to a game should be discouraged. Alcohol and tobacco usage during a game is prohibited.
14. Show respect for opposing coaches, team members and spectators.

### **CONDUCT**

#### **THE FOLLOWING ARE EXAMPLES OF UNSPORTSMANLIKE BEHAVIOR WHICH WILL RESULT IN PENALTIES TO BE ISSUED BY LEAGUE SUPERVISORS OR THE N.W.B.R.**

1. Use of profanity or abusive language directed to an official, player or fan.
2. Use of threatening actions or words towards an official, player or fan.
3. Aggressive physical contact with an official, player or fan. Example: Grabbing the arm, turning the individual around, poking, bumping, pushing, striking, etc.
4. Entering the field of play without consent of the umpire in chief.
5. Refusing to leave the playing area when instructed to do so by an official.
6. Constant and excessive heckling and harassing of an official, player, coach or fan.
7. Instructing or allowing players to play in a dangerous, illegal or unsportsmanlike manner.
8. Knowingly violate rules pertaining to team rosters.
9. Using or under the influence of alcohol during a game.

## **2007 OFFICIAL N.W.B.R. BASEBALL RULES**

### 2007 UMPIRE PAY

- Home team pays umpires
- Umpires are to be paid before the game
- Umpires will receive \$5.00 show up fee if game is rained out after it has started, or before a legal game.
- Umpire Coordinator is responsible for all home game umpires.

### PAY SCHEDULE:

D-1	\$20.00/Plate	\$10.00/Bases	\$20.00/One Umpire
D-2	\$20.00/Plate	\$10.00/Bases	\$20.00/One Umpire
C-1	\$20.00/Plate	\$15.00/Bases	\$25.00/One Umpire
C-2	\$25.00/Plate	\$17.00/Bases	\$30.00/One Umpire
B-1	\$25.00/Plate	\$17.00/Bases	\$30.00/One Umpire
B-2	\$25.00/Plate	\$17.00/Bases	\$30.00/One Umpire
A-Minor	\$30.00/Plate	\$22.00/Bases	\$40.00/One Umpire
A-Major	\$50.00/Plate	\$50.00/Bases	\$80.00/One Umpire

**NOTE:** In A-Major double headers, **EACH TEAM** pays an umpire. The **SCHEDULED HOME TEAM** pays for the plate umpire and the **SCHEDULED VISITING TEAM** pays the base umpire. In the event there is only 1 umpire, each team pays ½ of the umpire fee (\$40/ team).

**NOTE: This rule book is subject to change at any time by majority vote of the NWBR baseball supervisors. Interpretations of these rules by the NWBR baseball supervisors are final.**

## **2007 OFFICIAL N.W.B.R. BASEBALL RULES**

<b>CODE</b>	<b>FIELD NAME</b>	<b>PHONE</b>	<b>LOCATION</b>
CC	* Corpus Christi	825-6160 825-0236	Springdale or Struble & Hamilton (fields 1 thru 4) 2175 Springdale (fields 5 thru 8)
CG	* Clifford George		Forester and Mill.
CHS	Colerain Sr. High		Cheviot & Poole Rds.
CL	Clippard Park		Struble to Pottinger to Dewhill or Springdale to Season to Pottinger to Dewhill
CLP	Cleves Park		State Rt 128 S to Rt 50, Left on 50, Right on Mt. Nebo, Right on Miami view to Cleves Community Park. <u>PLEASE NOTE THERE IS A CHARGE TO PARK –</u> <u>THIS IS A VILLAGE OF CLEVES CHARGE.</u>
CP	* Colerain Park		Corner of Poole and Springdale
EL	Elda Elementary		Ross: Rt. 128 just west of Rt. 27
FF	* Farwick Fields	353-1900	Miamitown: I-74 & Rt. 128 on Furlong Dr.
GB	* Groesbeck Field		Claire Ave. off Galbraith, behind Groesbeck Library
HB	* Haubner	385-1840	White Oak Dr. off Cheviot Rd.
HP	Heritage Park		E. Miami River Rd- north of Blue Rock Rd. towards Ross
HT	* Three Rivers	851-7910	Civic Center Dr. South of I-275 off Hamilton or Pippin
JM	* St. James	385-4802	North of St. James School on Cheviot Rd
KC	* Northside K of C	923-3144	Blue Rock Rd. - west of Colerain
LF	* Little Flower	541-3106 588-8186 (Rainout No.)	Little Flower Dr. - off Kirby & Colerain, behind Little Flower Church
MA	Mt. Airy Elem. School		Colerain Ave. behind school or off Kipling
MG	* New Morgan School		Chapel Rd. - left on Rte 126 - 3 miles past Shandon
MH	* Monfort Heights		E. Miami River Rd. - 2 miles south of Harrison Ave. towards Cleves
<b>CODE</b>	<b>FIELD NAME</b>	<b>PHONE</b>	<b>LOCATION</b>

## ***2007 OFFICIAL N.W.B.R. BASEBALL RULES***

MP	* Mount Healthy Park		Hastings Drive east of Hamilton ½ block south of Adams
MS	Morris Fields		Hamilton Ave to West on Adams fields on left side
NW	Northwest High School		Pippin Rd. North of Struble.
RH	Ross High School		Ross - Rte 128 just east of Rte 27
SJ	* St. Johns/Bevis	385-7595	Dry Ridge Rd. West off Colerain just North of I-275
SP	Schottelkotte Park		<b>Fields 3 &amp; 4</b> Ruth Ave off Roosevelt - one block west of Hamilton ½ mile south of I-275 <b>Fields 1 &amp; 2</b> ¼ mile south of a Roosevelt on Hamilton to main park entrance on right
WP	* Wurzelbacher Flds	738-8100	Chapel Rd. - right on Rte 126 - 3 miles past Shandon

\* CONCESSION STANDS AVAILABLE

# CONCESSION STANDS AVAILABLE, **WEEKENDS ONLY**

***MANAGERS AND PARENTS:*** The concession stands help to defer the cost of athletic programs, so **PLEASE** support them. **DO NOT bring any food or drinks to fields with concession stands.**

***2007 OFFICIAL N.W.B.R. BASEBALL RULES***

**CLASS**

<b>A-MAJOR</b>	YOUTH BORN ON/ BETWEEN 5/17/88 AND 7/31/91 -	AGES 16, 17 & 18
<b>A-2</b> .....	YOUTH BORN ON/ BETWEEN 8/01/91 AND 7/31/92 -	AGE 15
<b>A-1</b> .....	YOUTH BORN ON/ BETWEEN 8/01/92 AND 7/31/93 -	AGE 14
<b>B-2</b> .....	YOUTH BORN ON/ BETWEEN 8/01/93 AND 7/31/94 -	AGE 13
<b>B-1</b> .....	YOUTH BORN ON/ BETWEEN 8/01/94 AND 7/31/95 -	AGE 12
<b>C-2</b> .....	YOUTH BORN ON/ BETWEEN 8/01/95 AND 7/31/96 -	AGE 11
<b>C-1</b> .....	YOUTH BORN ON/ BETWEEN 8/01/96 AND 7/31/97 -	AGE 10
<b>D-2</b> .....	YOUTH BORN ON/ BETWEEN 8/01/97 AND 7/31/98 -	AGE 9
<b>D-1</b> .....	YOUTH BORN ON/ BETWEEN 8/01/98 AND 7/31/99 -	AGE 8
<b>T-BALL</b>	YOUTH BORN ON/ BETWEEN 8/01/99 AND 7/31/02 -	AGES 5, 6 & 7

# 2007

## NORTHWEST

### BOARD OF

### RECREATION

### BASEBALL



#### BASEBALL SUPERVISORS:

Mike Kyle	729-0819
Rick Foster	385-8374
Scott Sebold	385-7547

#### Administrator

Charlie Spears	598-5820
<a href="mailto:cspearsmtairybb@hotmail.com">cspearsmtairybb@hotmail.com</a>	

#### AREA SUPERVISORS:

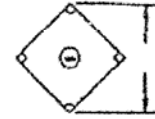
Bevis	Ronnie Gardner	<a href="mailto:midwesterncatv@yahoo.com">midwesterncatv@yahoo.com</a>	519-6009
Colerain	Mike Kyle	<a href="mailto:caa2005@cs.com">caa2005@cs.com</a>	729-1173
Corpus Christi	Rick Meinking	<a href="mailto:rick.meinking@fuse.net">rick.meinking@fuse.net</a>	851-0481
Monfort Heights	Roger Pott	N/A	662-4564
Morgan Ross	Greg Meyer	<a href="mailto:ajandrewsgroup@yahoo.com">ajandrewsgroup@yahoo.com</a>	200-0266
Mt. Airy	Paul Ross	<a href="mailto:mpr2349@fuse.net">mpr2349@fuse.net</a>	542-8922
Mt. Healthy	Lisa Hilling	<a href="mailto:hillig5@aol.com">hillig5@aol.com</a>	931-1621
Pleasant Run Farms	Michelle Sager	<a href="mailto:prfathletics@fuse.net">prfathletics@fuse.net</a>	674-7076
TCYO	Rick Foster	<a href="mailto:novas678@aol.com">novas678@aol.com</a>	385-8374
Three Rivers	Dan St. John	<a href="mailto:rd.saints699@fuse.net">rd.saints699@fuse.net</a>	941-8229
White Oak	Scott Sebold	<a href="mailto:ss2113@aol.com">ss2113@aol.com</a>	385-7547

## UMPIRE COORDINATORS

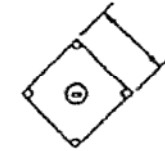
<u>AREA</u>	<u>COORDINATOR</u>	<u>PHONE NUMBER</u>
BEVIS	Ron Ehler	741-1374
COLERAIN	Tim McKeown	385-7070
CORPUS CHRISTI	Mark McCosham	825-8623
MONTFORT HTS.	Roger Pott	662-4564
MORGAN ROSS	Greg Meyer	200-0266
MT. AIRY	John Roelker	542-3815
MT. HEALTHY	Rick Wormus	729-0392
PLEASANT RUN	Tim Bates	742-4987
TCYO	Rick Foster	385-8374
WHITE OAK	Connie Enderle	923-1473
THREE RIVERS	Dan Lee	941-8827

# BASEBALL FIELD LAYOUT

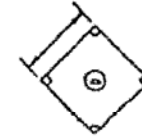
MEASURE FROM POINT OF HOME PLATE TO OUTFIELD CORNER OF 2<sup>nd</sup> BASE.



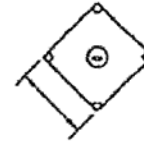
MEASURE FROM 1<sup>st</sup> BASE FOUL LINE TO LEFT FIELD SIDE OF 2<sup>nd</sup> BASE.



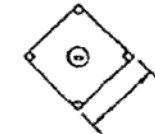
MEASURE FROM RIGHT FIELD SIDE OF 2<sup>nd</sup> BASE TO 3<sup>rd</sup> BASE FOUL LINE.



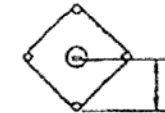
MEASURE FROM POINT OF HOME PLATE TO LEFT FIELD SIDE OF 3<sup>rd</sup> BASE.



MEASURE FROM POINT OF HOME PLATE TO RIGHT FIELD SIDE OF 1<sup>st</sup> BASE.



MEASURE FROM POINT OF HOME PLATE TO FRONT EDGE OF PITCHING RUBBER.



	<u>BASES</u>	<u>HOME TO SECOND</u>	<u>PITCHING RUBBER</u>
D1	60'	84' 9"	42'
D2	65'	91' 9"	45'
C1	70'	99'	48'
C2	75'	106' 1"	51'
B1	80'	113' 1"	54'
B2	85'	120' 2"	57'
A	90'	127' 3 3/8"	60' 6"